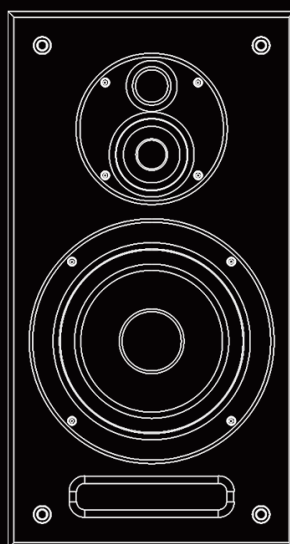


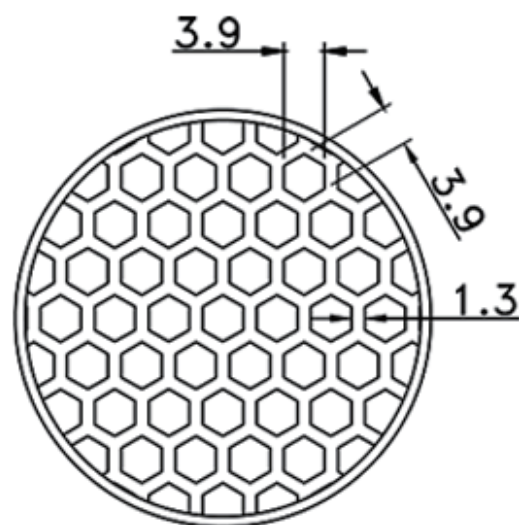
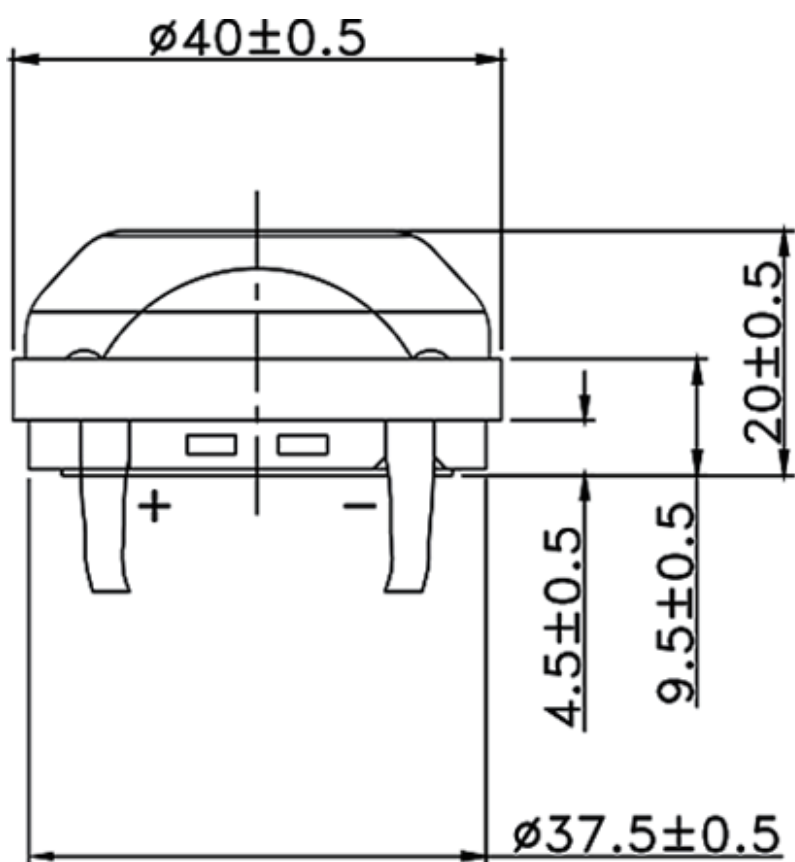
V65 产品规格书



高音规格书 (V65)

品名：25芯高音

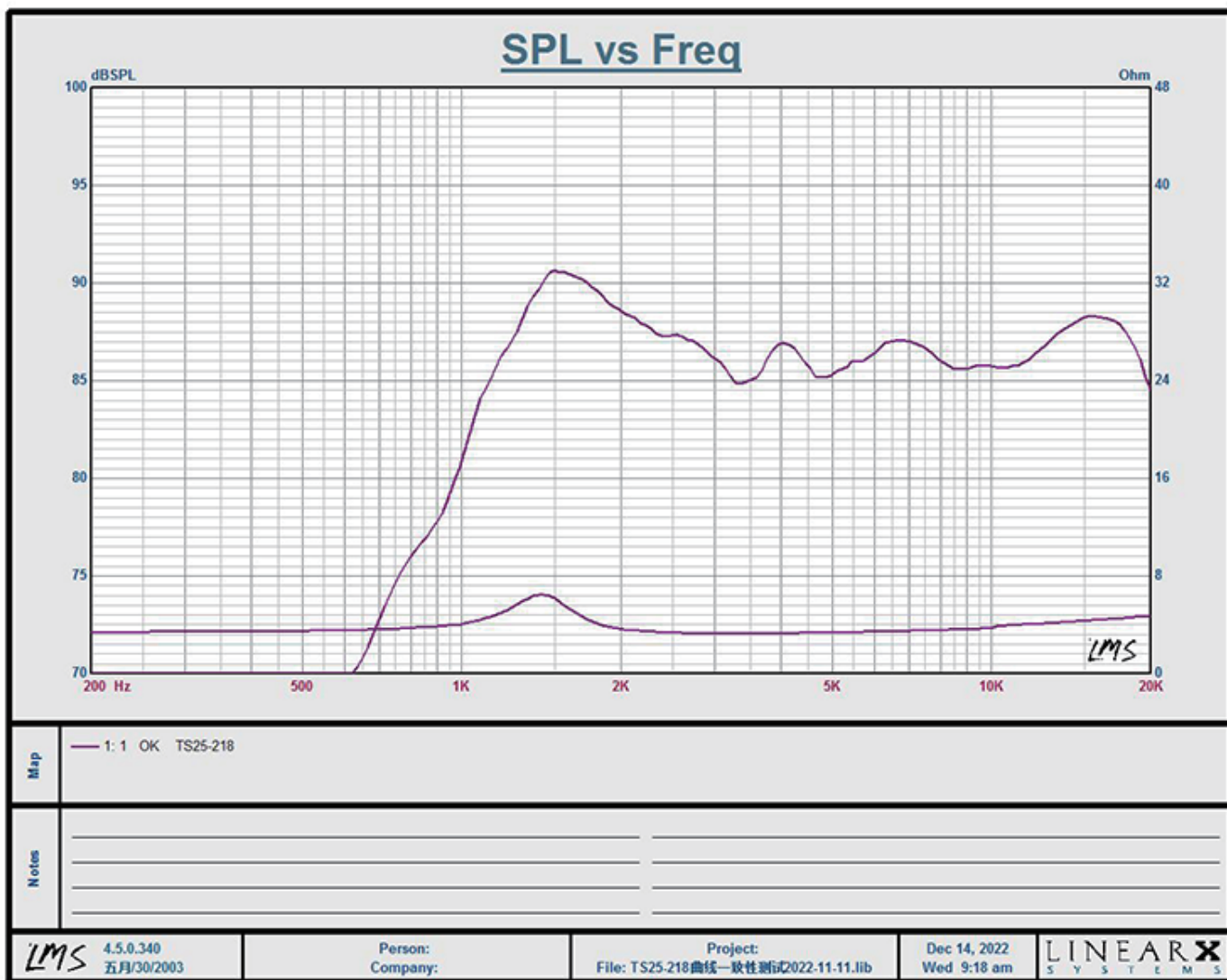
本厂型号：TS25-218 尺寸：40*20mm



高音规格书 (V65)

编号	项目 Item	规格 Specification		测试条件 Test Conditions
1	标称阻抗 Nominal impedance [ohm]	4 ohm ±15%		At 1 V 3.0 KHz
2	谐振频率 Free air resonance	1300 Hz ± 20%		LMS Test
3	动作实验 Operation Test	Must be normal at program Source		Sine wave 6.3V, F0-20KHz串接 3.3μF/50V电容
4	异常音 Buzz Ration Test	Must be normal at Sine Wave		Sine wave 2.0 V, 200-20KHz
5	实际频率范围 Ated Freq.Range	F0- 20 KHz		SPL-10dB At 1W Axial Calayate From 1M Measurment Average
6	额定输入功率 Ated Power Input	10w	最大输入功率 Max Power Input	20w
7	音圈规格 Voice coil spec	Former ASV wire CCAW DCR 3.2Ω Winding height 1.8 layers 2L Inside diameter		
8	磁路 Magnet structure	front plate thickness 2.0mm Back plate thickness 3.0mm Magnet size Φ24.5*3.5 N35 Magnet weight --- g () Ferrite (√) Neodymium		
9	纸盆 Paper basin	Surround material Silk Cone material Silk		
10	磁束密度 Flux Density	13000 Gauss		
11	连续负载 Load Test	After test meet item 2 and 3	串接3.3μF/50V电容10W/ 4omh 100 Hwith pink noise	
12	输出音压 Output SPL	Tweeter 85 dB+/-2dB (at 7.0K, 9.0K, 11K, 15KHz 1m/1w) Woofer dB+/-2dB (at 0.3, 0.4, 0.5, 0.6KHz) LMS test		
曲线管控: 3K-20KHz +/-2dB				

高音规格书 (V65)

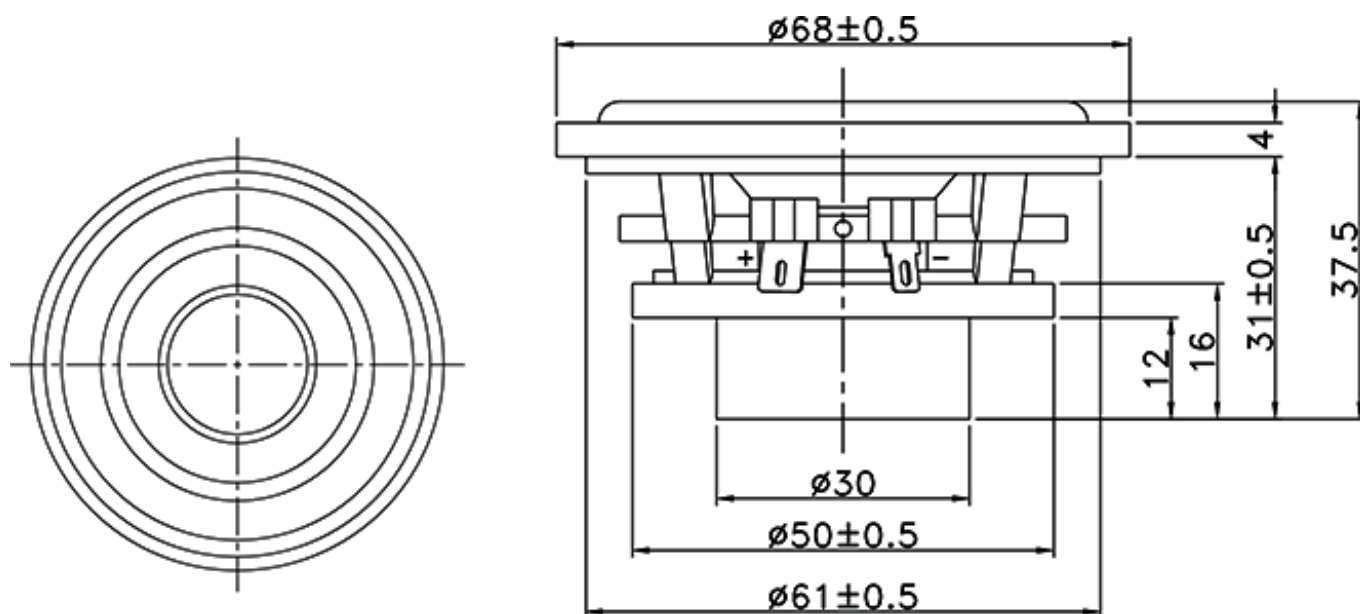


中音规格书 (V65)

品名：2.5寸中音

本厂型号：D70-34

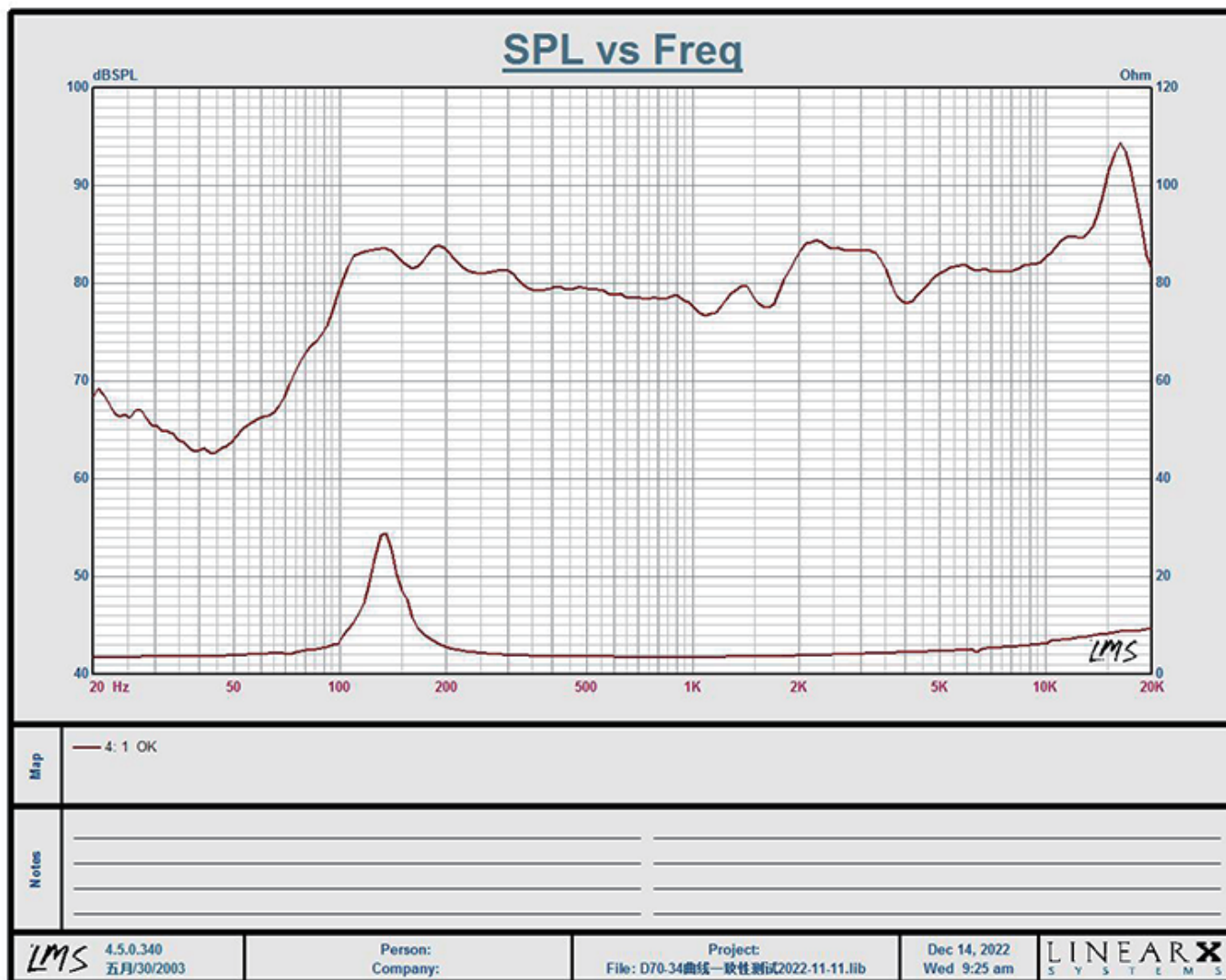
尺寸：68mm*37.5mm



中音规格书 (V65)

编号	项目 Item	规格 Specification	测试条件 Test Conditions
1	标称阻抗 Nominal impedance [ohm]	4 ohm ± 15%	At 1V 1000Hz
2	谐振频率 Free air resonance	190 Hz ± 20%	LMS Test
3	异常音 Buzz Ration Test	Must be normal at Sine Wave	Sine wave 6.3V, F0-20KHz
4	实际频率范围 Ated Freq.Range	F0- 20 KHz	SPL-10dB At 1W Axial Calayate From 1M Measurment Average
5	额定输入功率 Ated Power Input	10w	最大输入功率 Max Power Input 20w
6	音圈规格 Voice coil spec	Former KSV wire CCAW DCR 3.45Ω Winding height 5.7mm layers 2L Inside diameter	
7	磁路 Magnet structure	Magnet size 19.5*5 N38+18.5*3N35 Magnet weight --- g () Ferrite (√) Neodymium	
8	纸盆 Paper basin	Surround material Rubber Cone material AL	
9	磁束密度 Flux Density	8700 Gauss	
10	连续负载 Load Test	After test meet item 2 and 3	10W/ 4 ohm 100Hours
11	输出音压 Output SPL	Tweeter dB+/-2Db Woofers 84 dB+/-2Db AT(500,1000,3000,5000Hz)	
	有效辐射面积 Eff. diaphragm Area	2.043K mm	同振质量 Moving mass 1.827g ± 20%
	机电转换因子 Force facto BL	2.512 ± 20%	等效容积 Equivalent volume VAS 232.068mL ± 20%
	机械 Q 值 Mechanical Q Factor Qms	2.189 ± 20%	电 Q 值 Electrical Q Factor Qes 1.096 ± 20%
	总 Q 值 Total Q Factor Qts	0.731 ± 20%	音圈电感 Voice coil inductance 50.798uH

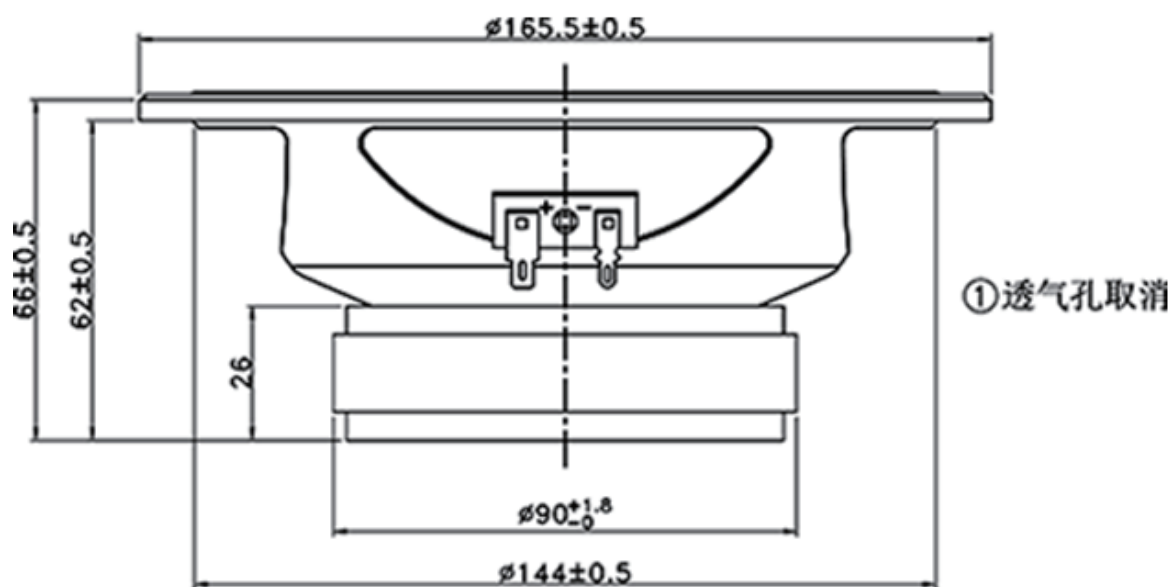
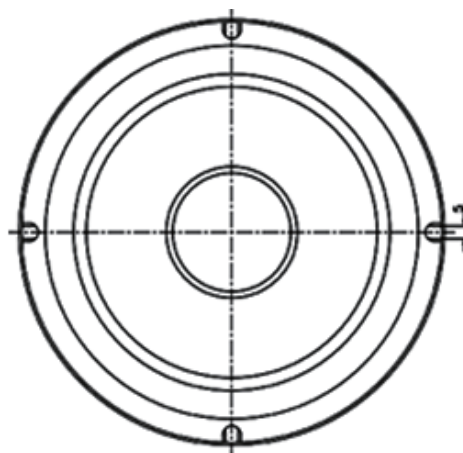
中音规格书 (V65)



低音规格书 (V65)

品名：低音

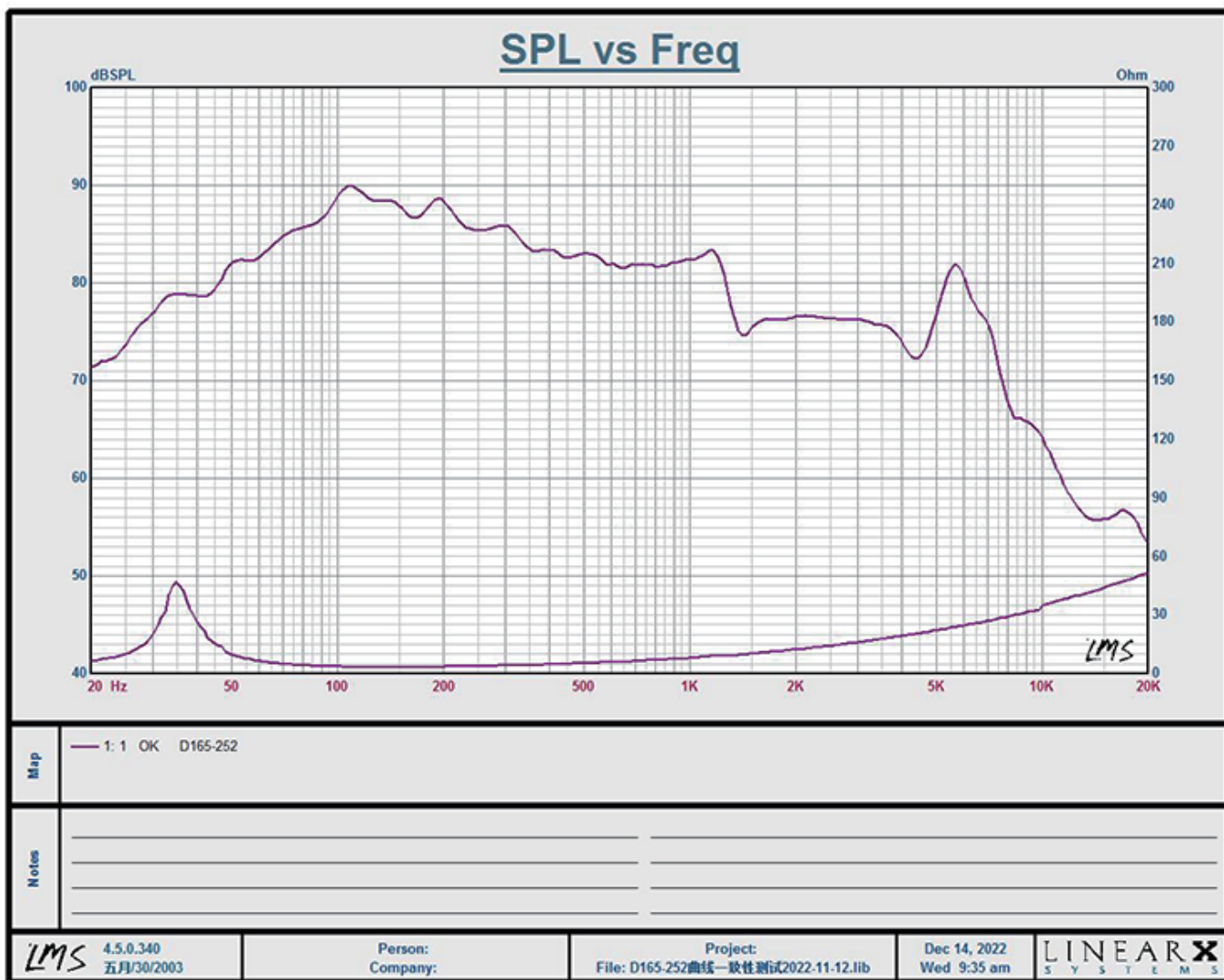
本厂型号：D165-252 尺寸：165.5mm*66mm



低音规格书 (V65)

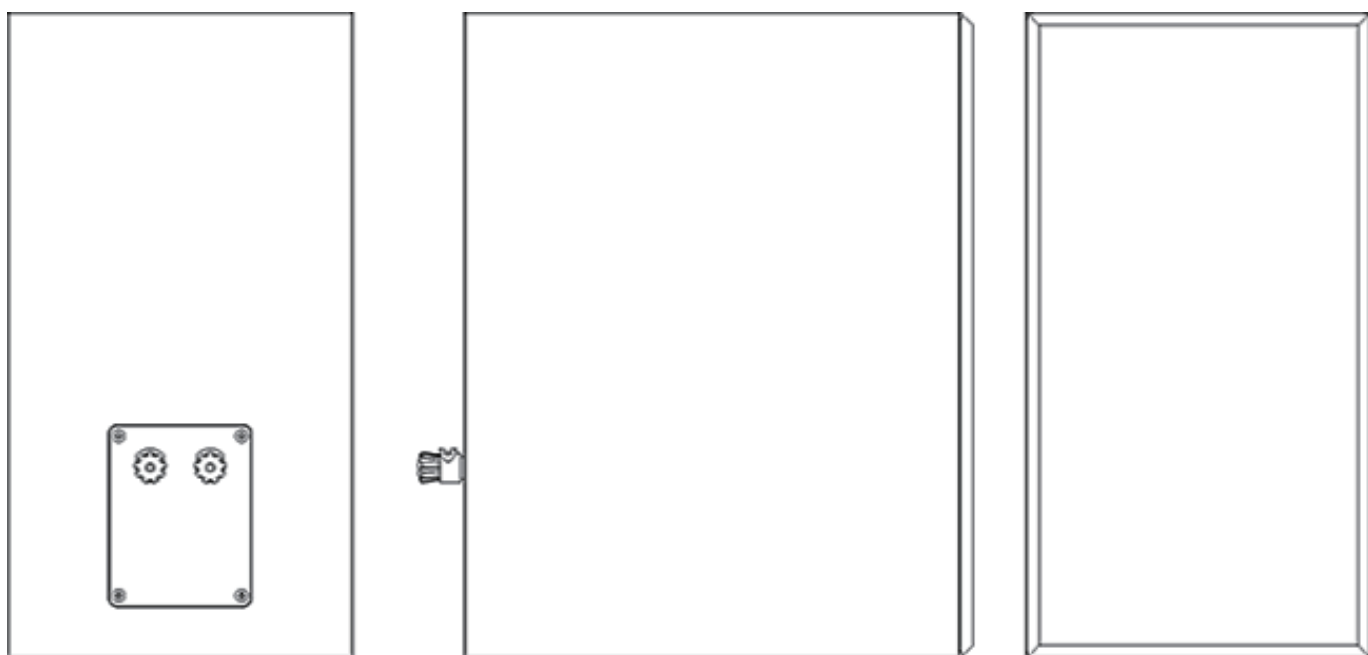
编号 Item	规格 Specification	测试条件 Test Conditions	
1 标称阻抗 Nominal impedance [ohm]	3 ohm±15%	At 1V 150Hz	
2 谐振频率 Free air resonance	40 Hz±20%	LMS Test	
3 异常音 Buzz Ration Test	Must be normal at Sine Wave	Sine wave 7.7V, F0HZ-1KHz	
4 实际频率范围 Ated Freq.Range	F0- 1 KHz	SPL-10dB At 1W Axial Calayate From 1M Measurment Average	
5 额定输入功率 Ated Power Input	20w	最大输入功率 Max Power Input	40w
6 音圈规格 Voice coil spec	Former ASV wire EISV DCR 2.8Ω Winding height 11.5mm layers 4L Inside diameter		
7 磁路 Magnet structure	Magnet size 90*45*15 Y35 Magnet weight --- g () Ferrite (√) Neodymium		
8 纸盆 Paper basin	Surround material Rubber Cone material AL		
9 磁束密度 Flux Density	7000 Gauss		
10 连续负载 Load Test	After test meet item 2 and 3	20W/ 3 ohm 100Hours	
11 输出音压 Output SPL	Tweeter dB+/-2Db Woofer 83.5 dB+/-2Db(0.2K,0.4K,0.6K,0.8K)		
有效辐射面积 Eff. diaphragm Area	14.957K mm	同振质量 Moving mass	17.422g±20%
机电转换因子 Force facto BL	5.449±20%	等效容积 Equivalent volume VAS	43.857L±20%
机械 Q 值 Mechanical Q Factor Qms	5.155±20%	电 Q 值 ElectricalQ Factor Qes	0.335±20%
总 Q 值 Total Q Factor Qts	0.315±20%	音圈电感 Voice coil inductance	-----

低音规格书 (V65)



箱体规格书（V65）

本厂型号：D165-252 尺寸：165.5mm*66mm



箱体规格书 (V65)

编号	项目 Item	规格 Specification	测试条件 Test Conditions
1	标称阻抗 Nominal impedance [ohm]	1300 Hz ± 20%	At 1V 150Hz
2	谐振频率 Free air resonance	35 Hz ± 20%	LMS Test
3	异常音 Buzz Ration Test	Must be normal at Sine Wave	Sine wave 2.0 V, 200-20KHz
4	实际频率范围 Ated Freq.Range	Fb- 20 K Hz	SPL-10dB At 1W Axial Calayate From 1M Measurment Average
5	额定输入功率 Ated Power Input	40w	最大输入功率 Max Power Input 80w
6	音圈规格 Voice coil spec	Former --- wire CCAW --- DCR --- Winding height --- layers --- Inside diameter	
7	磁路 Magnet structure	Magnet size ---- Magnet weight --- g () Ferrite () Neodymium	
8	纸盆 Paper basin	Surround material --- Cone material ---	
9	磁束密度 Flux Density	--- Gauss	
10	连续负载 Load Test	After test meet item 2 and 3	测试信号: EIA-426B 24H
11	输出音压 Output SPL	SPEAKER 84dB±3 83.5 dB+/-2Db(AT 200Hz、600Hz、 800KHz、2KHz、4KHz、6KHz、8KHz 1M/1W)	
曲线管控: 与黄金样对比检测频响和阻抗曲线20-20KHz±3dB			

箱体规格书 (V65)

